



2am : dessertbar
by Janice Wong

TAKEAWAYS



CHOCOLATE PRALINE POPROCKS CAKE



Items included:
Praline Poprocks,
Chocolate Cake,
Popcorn Powder,
Vanilla Ice Cream

***Contains Dairy,
Nuts and Eggs***

20

STRAWBERRY CAPRESE



Items included:
Strawberry Ice
Cream Parfait
& Raspberry Fluff,
Lychee Pearls,
Fresh Strawberries,
Pickled Strawberries,
Strawberry Consommé,
Lavender
Marshmallows,
Chartreuse Jelly

***Contains Alcohol,
Dairy, Eggs
and Gelatine***

23

CHOCOLATE H2O



Items included:
Chocolate Water
Mousse, Salted
Caramel, Yuzu
Sorbet, Yuzu
Calamansi Sauce,
Chocolate Soil,
Burnt Caramel
Parfait

***Contains Dairy,
Eggs and
Gelatine***

23

TWIX



Items included:
Burnt Caramel
Bava-rois,
Peanut Crumble,
Chocolate Sauce,
85% Dark Chocolate
Ice Cream, Chopped
Chocolate

***Contains Nuts,
Dairy, Eggs and
Gelatine***

18

***All items are packed separately
Ice cream & sorbet packed with dry ice***

TOFFEE PUDDING WITH SEA SALT CARAMEL ICE CREAM



Items included:
Toffee Pudding,
Vanilla Custard,
Maple Whisky Jelly,
Toffee Sauce,
Sea Salt Caramel
Ice Cream

***Contains Alcohol,
Dairy and Eggs***

18

TIRAMISU



Items included:
Tiramisu,
Caramelized
Rice Crispy,
Cocoa Powder,
Dark Crunchy Pearls,
Espresso Ice Cream
Served in a Glass Jar
(280grams)

***Contains Alcohol,
Dairy, Eggs
and Gelatine***

18

CHOCOLATE MOLTEN TART



Molten Chocolate
Tart, Salted
Caramel Sauce,
Yuzu Calamansi
Gel, Dark
Chocolate
Pearls, Blood
Orange Sorbet

***Contains Dairy
and Eggs***

18

2AM: GLASS DESSERT MANGO YUZU



Mango Yuzu Mousse,
Speculoos, Mango
Pastry Cream

****Includes glass
jar worth \$8***

18

***All items are packed separately
Ice cream & sorbet packed with dry ice***

2AM: GLASS DESSERT STRAWBERRY VANILLA



Strawberry Mousse,
Vanilla Mousse,
Strawberry Jam,
Pistachio Soil,
Pastry Cream,
Creme Chantilly

****Includes glass
jar worth \$8***

18

2AM: GLASS DESSERT CHOCOLATE CARAMEL



Chocolate Mousse,
Salted Caramel,
Chocolate Soil,
Burnt Caramel
Bavaois, Caramel
Pastry Cream

****Includes glass jar
worth \$8***

18

2AM: CHEESECAKE



Flavours:

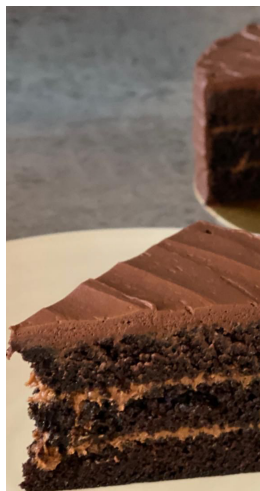
- Classic
- Baileys
- Rum

****Contains Dairy,
Eggs, Alcohol
(Baileys I Rum)***

25
(Classic)

26
(Rum I Baileys)

PRALINE FEUILLETINE CAKE



A slice of chocolate
cake with hazelnut
crunchy wafer icing
(approx 130gm).
made with Janice
Wong Pure Imagination
70% dark chocolate

***Contains Eggs, Dairy,
Nuts***

8

***All items are packed separately
Ice cream & sorbet packed with dry ice***

GLAZED POPCORN CHICKEN



Flavours:

- BBQ Honey
- Teriyaki Lime

16

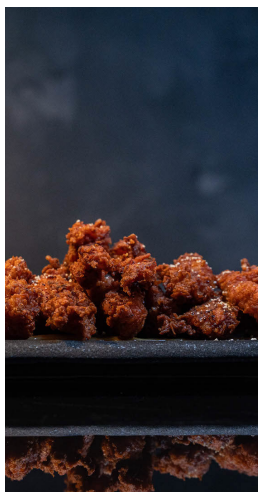
HAMBURGER TACO



Cumin Beef,
Spring Onion, Green
Peppers, Lettuce,
Salsa

18

2AM: POPCORN CHICKEN



Homemade Korean
Marinade, Lime
Aioli, Popcorn
Powder

18

MAC & CHEESE



Crispy Smoked Turkey
Bacon, Truffle

24

All items are packed separately

CHURROS



Churros coated with cinnamon sugar. Freshly made daily (8pcs).

***Contains Dairy and Eggs**

Churros Dips:

- Dark Chocolate
- Salted Caramel
- Milk Chocolate
- Chocolate Truffle

+6

- Whisky Milk Chocolate

+14

8

FRESHLY BAKED FINANCIERS



Flavours:

- Pistachio
- Black Sugar
- Coffee

8

FRESHLY BAKED MADELEINES



Flavours:

- Orange
- Matcha
- Chocolate

**10 pcs
(approximately
60gms)**

**Made to order
upon purchase**

8

SINGLE ORIGIN HOT CHOCOLATE



Made with Pure Imagination 70% dark chocolate (200ml)

***Includes double walled glass cup**

18

KETO AND PLANT BASED

KETO AND PLANT BASED MIX BOX OF 3

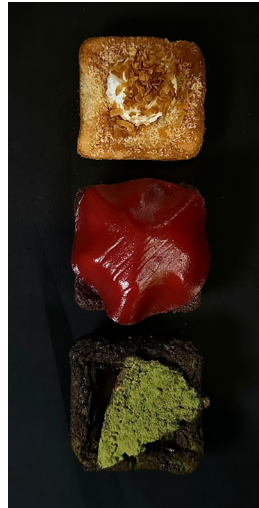


Includes:

- Keto Banana Chocolate Cake
- Chocolate Pecan
- Coconut Crunch

28

KETO MIX BOX OF 3



Includes:

- Matcha Basque Cheesecake
- Coconut Cake
- Berries Mascarpone

28

KETO AND PLANT BASED MIXED BOX OF 6



Includes:

- Keto Banana Chocolate Cake
- Chocolate Pecan
- Coconut Crunch
- Matcha Basque Cheesecake
- Coconut Cake
- Berries Mascarpone

55

KETO AND PLANT BASED MIXED BOX OF 9



Includes:

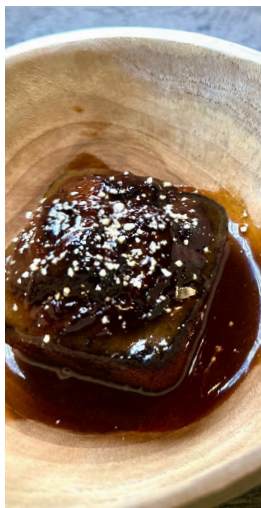
- Keto Banana Chocolate Cake
- Chocolate Pecan
- Coconut Crunch
- Matcha Basque Cheesecake
- Coconut Cake
- Berries Mascarpone

Ice Cream

- Avocado Pistachio
- Roasted Banana
- Vanilla Almond

70

VEGAN STICKY DATE PUDDING



Slice of warm sticky date pudding with vegan toffee sauce, Red Dates, Soy Milk, Vegan Butter, Brown Sugar, Coconut Cream
Suitable for: Vegan, Dairy Free

Contains Gluten.



10

BANANA CHOCOLATE CAKE



Coconut Flour, Maltitol, Keto Dark Chocolate, Coconut Oil, Flax Seeds, Banana, Pecan Nuts, Cinnamon, Coconut Cream



9

COCONUT CAKE



Coconut Flour, Coconut Oil, Coconut Cream, Maltitol, Eggs, Madagascar Vanilla

Suitable for: Keto / Gluten Free

Contains Eggs



7

KETO AND PLANT BASED ICE CREAM CUPS



Flavours:

- Avocado Pistachio
- Roasted Banana
- Vanilla Almond

Suitable for : Keto / Gluten Free

Contains Nuts



5.5



PLANT WITH DAIRY GLUTEN LOW
BASE NUTS FREE FREE CARB

COCONUT CRUNCH



Almond Flour,
Coconut Cream ,
Coconut Sugar,
Toasted Coconut,
Eggs, Maltitol,
Cranberry
Suitable for :
Keto / Gluten Free

**Contains Nuts,
Eggs**



8

CHOCOLATE PECAN



Pure Imagination
70% Dark Chocolate,
Vegan Butter,
Coconut Yoghurt,
Pecan Nuts,
Coconut Cream,
Plant Based Praline
Suitable for :
*Dairy Free,
Vegan, Keto*

Contains Nuts



9

MATCHA BASQUE CHESSECAKE



Cream Cheese,
Maltitol, Eggs,
Madagascar
Vanilla, Matcha,
Pistachio Nuts,
Suitable for :
Keto, Gluten Free

**Contains Dairy,
Eggs, Nuts**



9

BERRIES MASCARPONE



Almond Flour,
Maltitol, Olive Oil,
Eggs, Cream Cheese,
Mascarpone,
Blackberry,
Raspberry,
Strawberry
Suitable for :
Keto / Gluten Free

**Contains Nuts, Eggs,
Dairy**



9



OPENING HOURS

MONDAY
CLOSED

TUESDAY - SUNDAY
3:00PM - 2:00AM

LAST ORDER
1:00AM - SAVOURY FOOD & ALCOHOL
1:30AM - DESSERTS & NON-ALCOHOLIC BEVERAGES

2am: dessertbar by: Janice Wong
www.2amdessertbar.com

WE ONLY ACCEPT CARD/ PAYWAVE PAYMENT