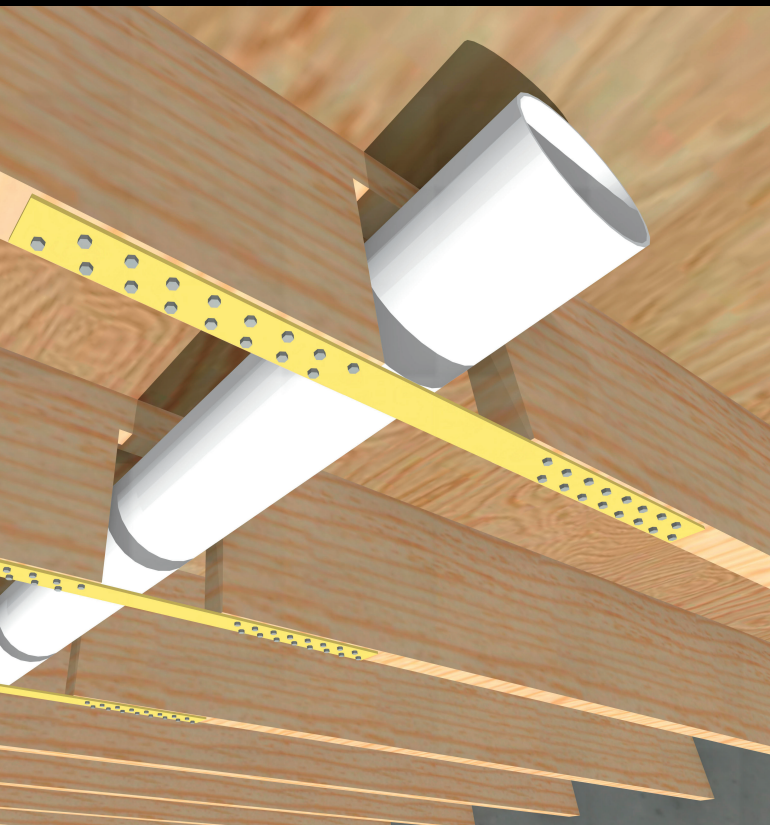
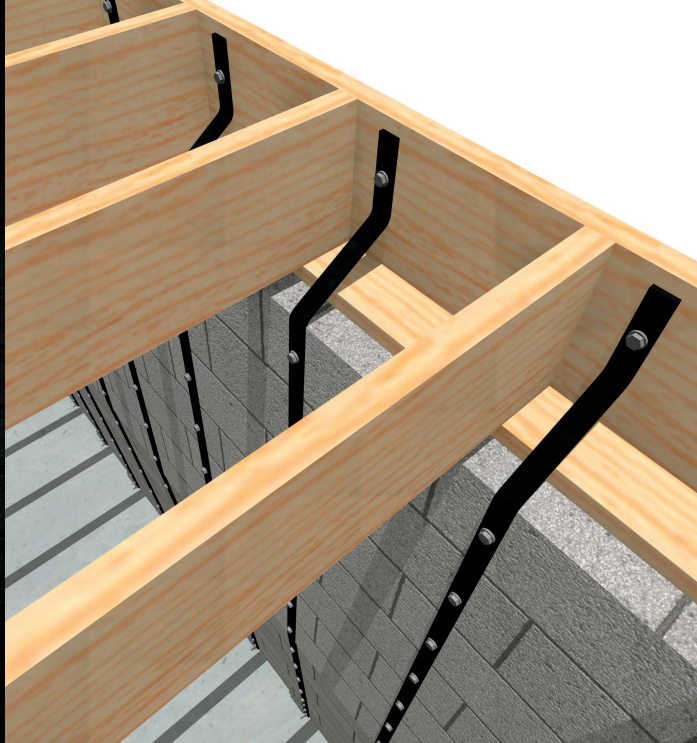




NOLAN

STRUCTURAL PRODUCTS, LLC



PRODUCT CATALOG

2023-2024

www.nolanstructuralproducts.com



WELCOME TO **Nolan Structural Products**

Nolan Structural Products, LLC was incorporated in 2021 and provides alternative repair methods that are often faster, easier, and more affordable. Our products are designed and certified by Professional Engineers and are currently being sold in all 50 US States and Canada.

Nolan Structural Products, LLC is a US based company and our products are all manufactured in the USA. We are a partner company of Nolan Engineering, PLLC and we offer design reports and/or engineering reports to accompany our products in order to obtain approval from Code Enforcement.

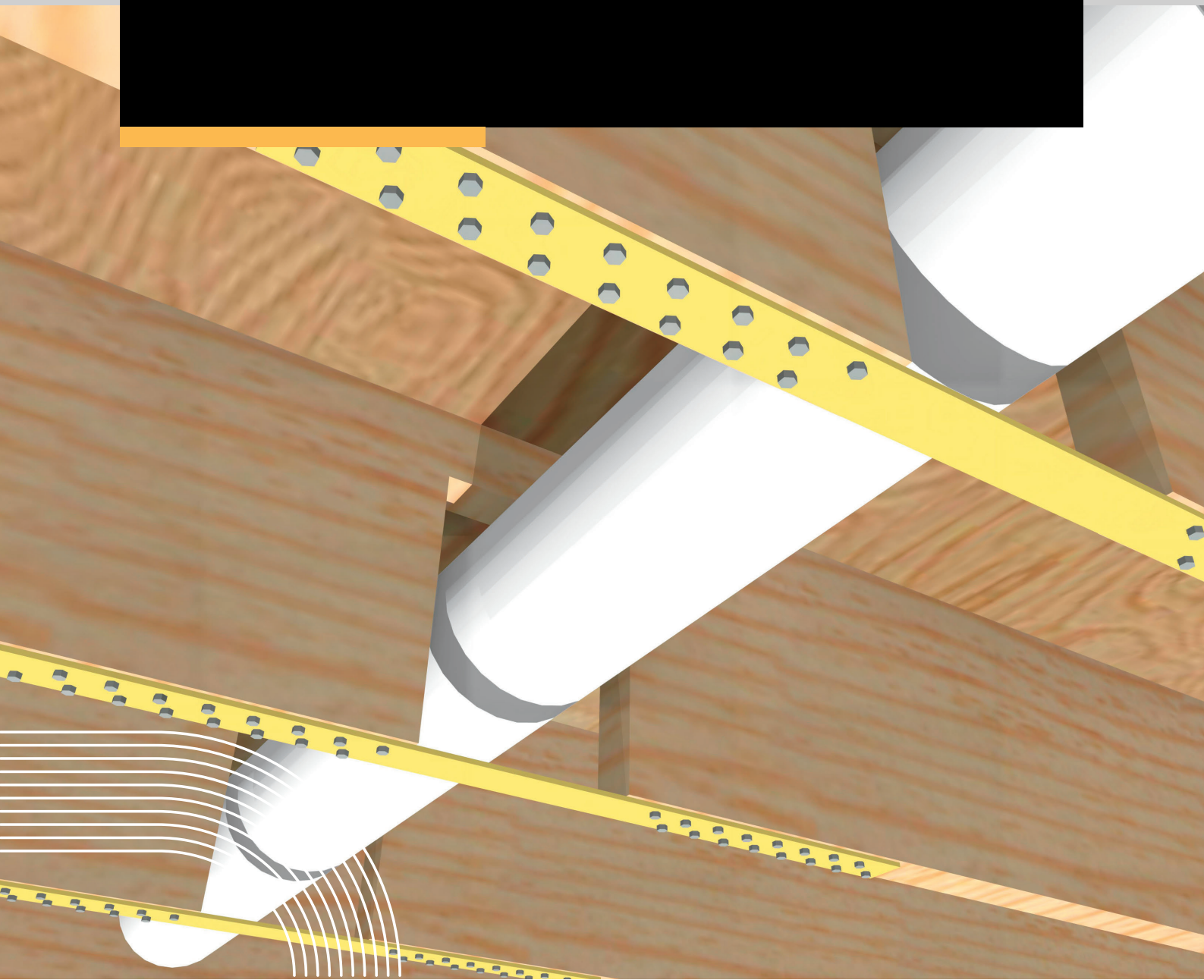
TABLE OF Contents

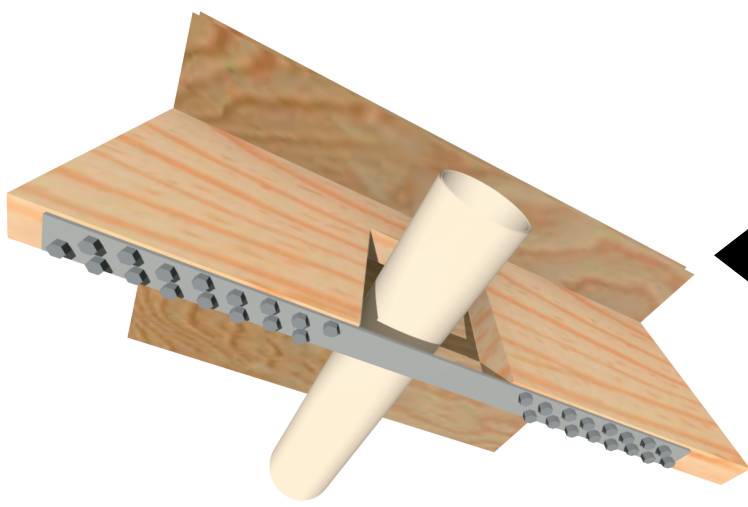
Welcome Message	1
Table of Contents	2
Joist Repair Collection	3
Insta-Footing Collection	6
Basement Wall strap	9
EZ Brace	11
Attic Access Bulkhead & Concrete Post Base Connector	12
Nolan Beam	13
Our Contact	14



JOIST REPAIR **Collection**

Cut, notched and damaged floor joists are a common problem, particularly in older homes, making our Joist Repair products our most popular collection. This product line offers an alternative method of repairing damaged floor joists that doesn't require sistering or removing lines that are running through the floor joists. These products fully restore the strength of the joist and come with all of the necessary hardware for quick and easy installation. Our products are currently available in all 50 US States and Canada. We also offer engineering reports to accompany our products to assist with obtaining approval from Code Enforcement.





JOIST REPAIR KIT

The Joist Repair Kit is designed to repair bottom notched, drilled or damaged floor joists without needing to remove any plumbing/wiring which may go through the joist. Our product provides an affordable, alternative solution to sistering the joist in order to restore the integrity of the joist and promote safety. The Joist Repair Kit is great for homeowners, contractors, and DIYers as it includes everything needed to install. Once the strap is installed it will fully restore the strength of the floor joist.

Easy To Install

Hardware Included

Multiple Sizes Available

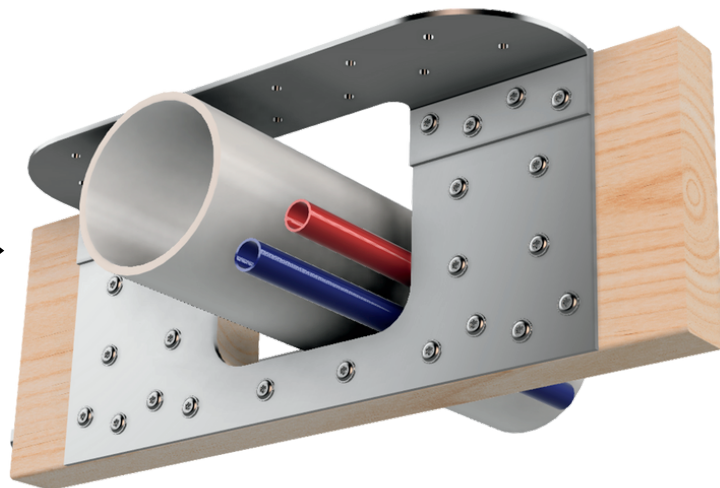
JOIST NOTCH REPAIR KIT

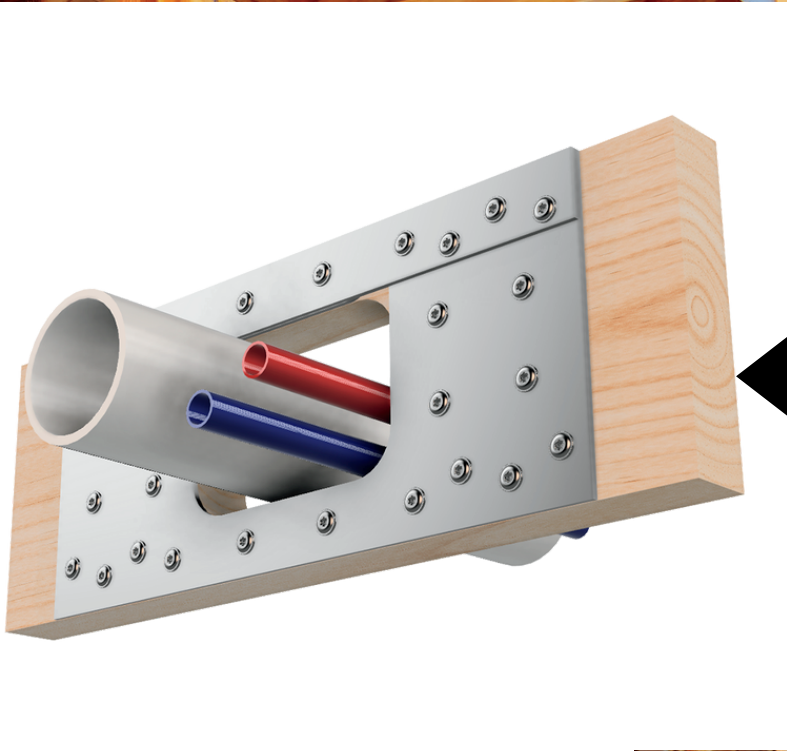
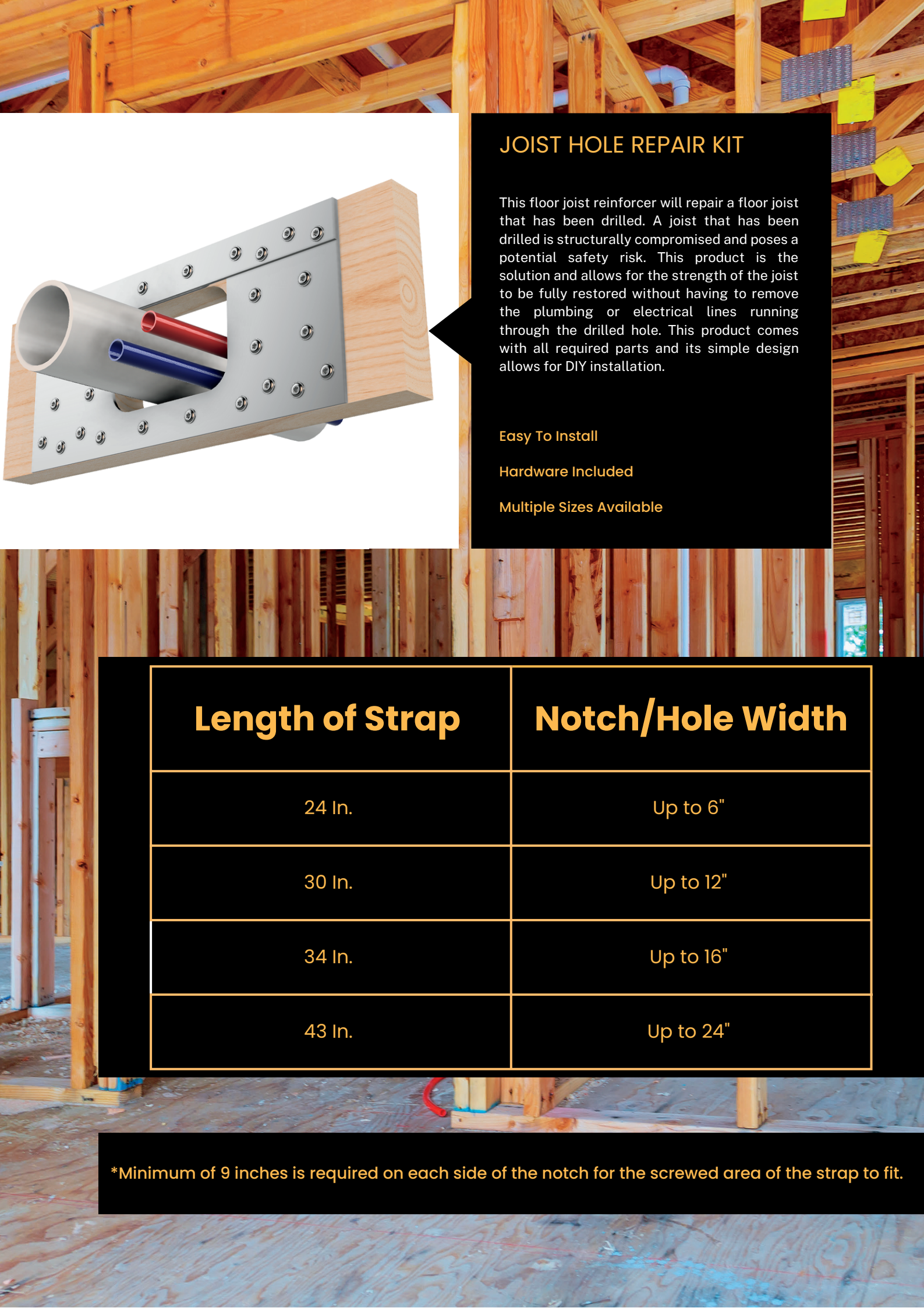
The Floor Joist Notch Repair Kit (patent pending) will repair a floor joist that has been top notched. A joist that has been notched is structurally compromised and poses a potential safety risk. This product is the solution and allows for the strength of the joist to be fully restored without having to remove the plumbing or electrical lines running through the drilled hole. This product comes with all required parts and its simple design allows for DIY installation. Using 10 gauge galvanized steel and 28 structural fasteners, the Floor Joist Reinforcer is one of the strongest floor joist repair products on the market.

Easy To Install

Hardware Included

Multiple Sizes Available





JOIST HOLE REPAIR KIT

This floor joist reinforcer will repair a floor joist that has been drilled. A joist that has been drilled is structurally compromised and poses a potential safety risk. This product is the solution and allows for the strength of the joist to be fully restored without having to remove the plumbing or electrical lines running through the drilled hole. This product comes with all required parts and its simple design allows for DIY installation.

Easy To Install

Hardware Included

Multiple Sizes Available

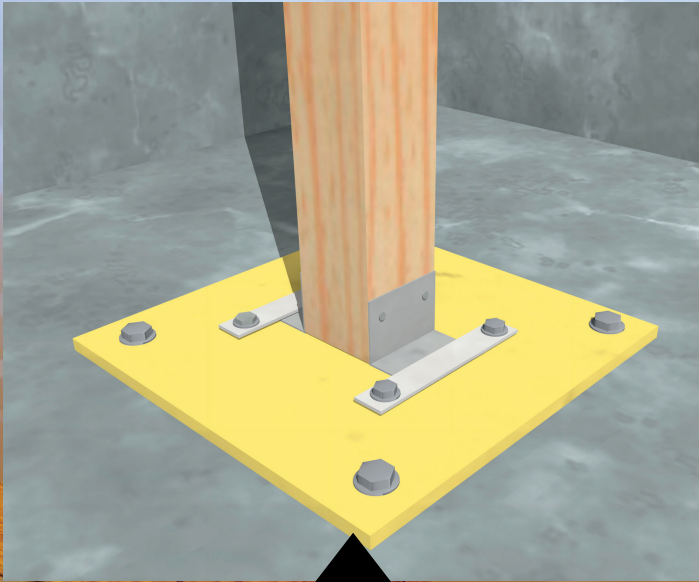
Length of Strap	Notch/Hole Width
24 In.	Up to 6"
30 In.	Up to 12"
34 In.	Up to 16"
43 In.	Up to 24"

*Minimum of 9 inches is required on each side of the notch for the screwed area of the strap to fit.



INSTA-FOOTING **Collection**

The Insta-Footing is an alternative solution to poured concrete footings. This product allows you to add additional support in your basement or crawlspace without having to cut into the concrete and pour additional footings. Instead, the Insta-Footing is placed on the dirt or concrete floor and is adjustable for various sized posts or lally columns. This product is available in both steel and carbon fiber and comes with the necessary hardware which allows for easy, DIY installation. We also provide design reports and engineering reports, if needed, in order to obtain approval from Code Enforcement.



STEEL INSTA-FOOTING

Insta-Footing is an affordable alternative to a poured concrete footing, saving significant time and money. The Insta-Footing is placed on top of a poured concrete floor slab that is at least 3.5 inches thick. The slab may be required to be leveled with non-shrink grout, if existing conditions warrant. The Insta-Footing is secured to the floor with either two 1/2" diameter concrete expansion anchor bolts, two concrete screws, or power-driven nails.

Easy To Install

Hardware Included

Multiple Sizes Available

Insta-Footing Loads

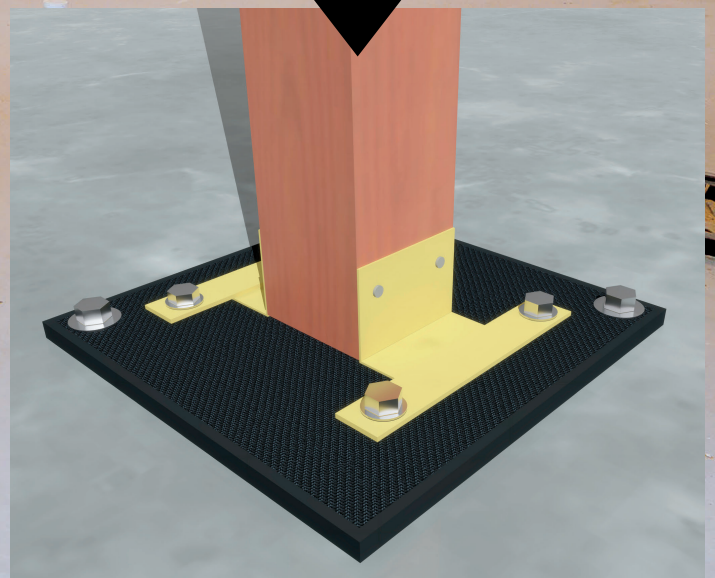
Plate Size	On 3.5" Concrete	On Dirt
12"x12"x1/2"	9,000#	2,000#
16"x16"x1/2"	12,500#	3,500#

CARBON FIBER INSTA-FOOTING

Our Insta-Footing product is also available in Carbon Fiber. The Carbon Fiber Insta-Footing combines all of the features and benefits of the Steel Insta-Footing, but is exceptionally lighter and easy to transport. The Carbon Fiber Insta-Footing is also more affordable, making this a great repair option when installing additional posts or columns.

Easy To Install

Hardware Included



NOLAN

PROFESSIONAL GRADE

STRUCTURAL PRODUCTS, LLC.



Carbon Fiber INSTA - FOOTING



**EASY TO INSTALL
STRUCTURAL
SUPPORT
POST BASE**

**NO DIGGING !
NO MIXING !
NO WAITING !**



**For more information
or to place an order
please visit our website.**

nolanstructuralproducts.com



Check out our complete line of PRO QUALITY DIY PRODUCTS.



Basement Wall Straps

Nolan Structural Products Basement Wall Strap system provides a permanent repair for bowing block foundation walls. Although this product will not remove the bow from the wall, it will prevent the wall from bowing further or caving in. The flexible steel straps are able to be installed around basement fixtures and includes all of the necessary hardware. This repair option is exceptionally more affordable than alternative options such as having to replace the foundation wall. We provide a spacing table, installation instructions, and the necessary documentation making DIY installation quick and easy.

Basement Wall Strap

Spacing Table

Table 1 - Maximum Strap Spacing per Soil Backfill Height & Soil Type

Wall Height [ft]	Maximum Backfill Height [ft]	Strap Spacing [in]		
		Class I – GW, GP, SW and SP	Class II – GM, GC, SM, SM-SC and ML	Class III – SC, MH, ML-CL and inorganic CL
4	2	48	48	48
	3	48	48	48
	4	48	48	48
5	3	48	48	48
	4	48	48	48
	5	48	48	48
6	4	48	48	48
	5	48	48	40
	6	48	40	24
7	4	48	48	48
	5	48	48	40
	6	48	32	24
	7	40	24	16
8	4	48	48	48
	5	48	40	32
	6	48	24	16
	7	32	16	16
	8	24	16	8
9	5	48	32	32
	6	40	24	16
	7	24	16	8
	8	16	8	8
	9	16	8	8

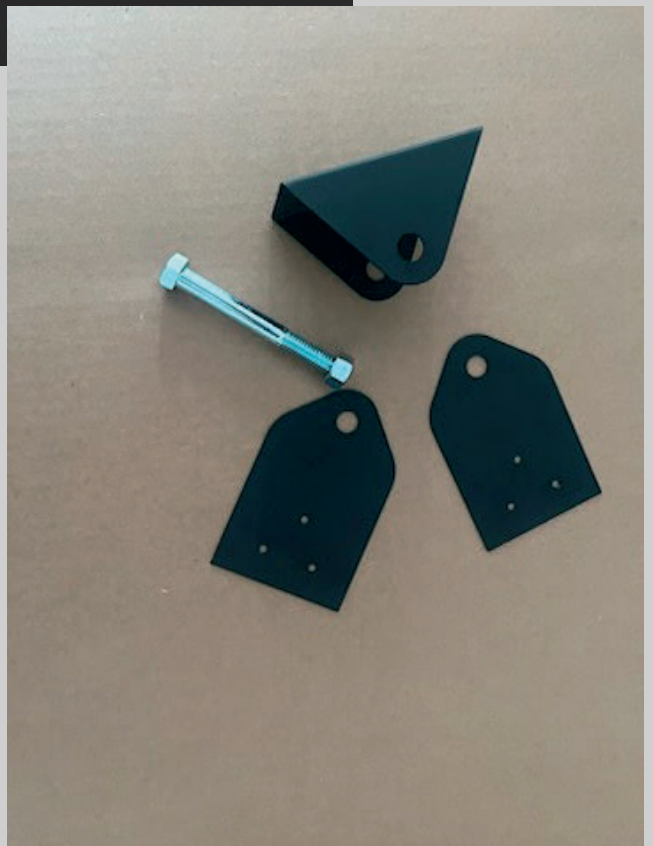
NEW

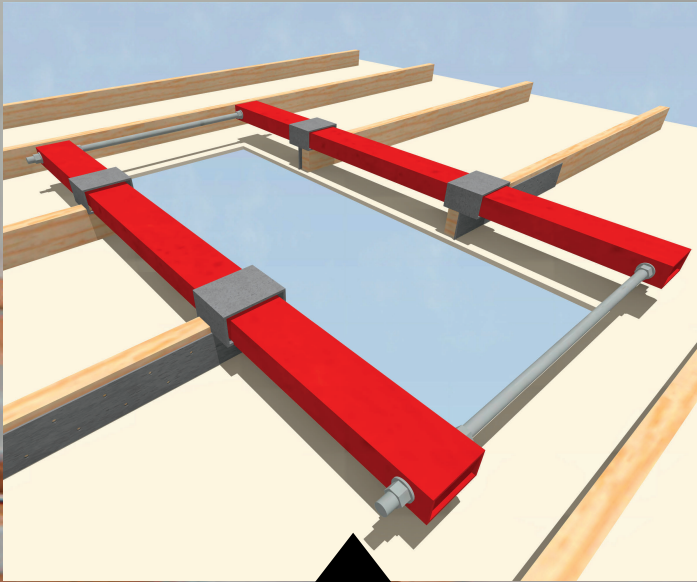
EZ Brace

EZ Brace is an easy to install angel braces for post-to-beam connections that provides lateral stability from wind, snow, gravity and impact loads and adjusts to angels between 0 and 90 degrees. Our kit is available in both galvanized steel and matte black and includes all of the necessary hardware for installation.

Kit Includes:

- **2 - U-Shaped Steel Brackets**
- **4 - Flat Steel Plates**
- **2 - Bolts**
- **2 - 1/2" Nuts**
- **24 - Simpson #10 1 1/2" Screws**





ATTIC ACCESS BULKHEAD

The attic access bulkhead is designed to prevent the roof from spreading and the exterior walls from being displaced when trusses or ceiling joists need to be cut in order to provide access to the attic. The bulkhead attaches to the sides of the bottom truss chords or ceiling joists and resists the spreading (pulling apart) loads that exist in the truss bottom chords or ceiling joists thereby maintaining the strength and integrity of the roof system. The attachment points slide onto the rails making them easily adjustable to line up with the truss or joist. This product is designed to fit around a standard 22.5" wide by 54" long attic and comes in easily assembled pieces.

CONCRETE POST BASE CONNECTOR

Nominal 6" x 6" (actual 5.5" x 5.5") wood post-to-concrete base connector with composite standoff base. This connector has a 1", squash proof, paintable, UV protected, decay resistant, composite base. Secure connector to concrete using 5/8" x 4" min, Simpson Titan HD Anchor. Post connector is good for 10,000# download and 600# uplift.

Easy To Install

Hardware Included



Coming Soon



**10x Stronger
than
LVL/Microlams**

Novel - Composite Wood/Steel Beam

Options- Can be installed in 1.5" plies

Liftable - 1/4 the weight of like-size steel I-beam

Attachable - Using wood core or steel side

Nominal Sizes - Available in Nominal or Custom Sizes

Uses:

- ✓ Longer spans than LVL for truly flush beams that don't protrude down below the floor joist
- ✓ Shorter, low-profile headers
- ✓ Tall walls such as gable end walls subject to wind loading
- ✓ Removing posts
- ✓ When fewer posts are required, such as deck construction
- ✓ Low-profile floor joists

↑
Expected June 2023!



OUR Contact



NOLAN
STRUCTURAL PRODUCTS, LLC

Get in touch with Us!



518-280-3190



admin@nolanstructuralproducts.com



www.nolanstructuralproducts.com



333 Kingsley Rd., Burnt Hills, NY
12027

1 Charlton Rd., Suite 106,
Ballston Spa, NY 12020





NOLAN

STRUCTURAL PRODUCTS, LLC

www.nolanstructuralproducts.com