

CROSSMARK ARKPLATE INSTRUCTIONS

The CROSSMARK ARKPLATE is used to record the first 4 letters of your Digital Asset Wallet BIP39 Recovery Phrase. The BIP39 Word List consists of a universally agreed upon, and openly accessible set of 2048 English words. The first 4 letters of every word on this list are unique, and only appear once. This means that you only need to identify the first 4 letters of any given BIP39 word to figure out what it is. Some words may only contain 3 letters, and you will leave the 4th dot blank on that word. YOUR WORDS MUST BE RECORDED IN THE ORDER IN WHICH THEY WERE ISSUED TO YOU, DO NOT RANDOMIZE YOUR WORDS.

*** To prevent mistakes, please consider using a pencil, or a fine permanent marker to pre-mark your entire CROSSMARK ARKPLATE, and to check your marks for accuracy before using the included center punch. ***

Place your CROSSMARK ARKPLATE on top of a hard, flat, and sturdy surface such as a kitchen table or workbench.

We strongly suggest placing a kitchen cutting board beneath the ARKPLATE to prevent damage to the surface below.

DO NOT place it on glass, tile, or onto any fragile, unsupported, or easily damaged surface.

Vertically place the Knurled Center Punch tip on the dot that corresponds with the letter you are recording.

Use a hammer to lightly strike the back end of the punch to mark your selected dots.

We suggest starting with light strikes, because if you make a mistake the first time around – you can create a deeper mark on the correct letter to emphasize it.

If you wish to deepen your marks to ensure their permanence, re-punch all the marks you have made previously.

Triple check that all marks are both on the correct letters, and that your letters are in the correct order.

The WID section is a Wallet Identifier Number, used to discern the owner of any given wallet. Use a unique WID for each member of your family and keep a record of which WID belongs to individual family members' wallets.

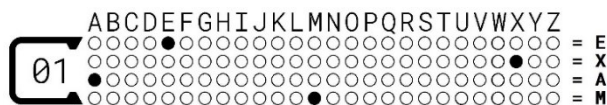
The PIN section is used to record the access PIN to your wallet. You can reference this number for quick access in the event you forget it, rather than resetting your entire wallet and reassigning a new PIN.

For additional details regarding setting up your Crossmark wallet, please visit:

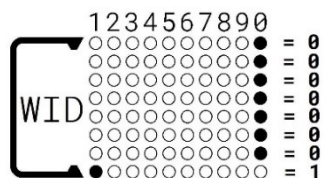
<https://support.crossmark.io/instructions/arkplate>

To destroy your CROSSMARK ARKPLATE, mark at least 3 other real and randomized BIP39 words in all 24 word areas.

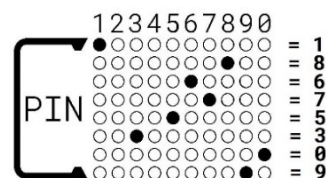
VISUAL EXAMPLES



WORD #1: EXAMPLE
(E X A M) P L E



JENNYS' WALLET ID
00000001



JENNYS' WALLET PIN
18675309