



YARAS CORP

# PRODUCT CATALOG 2025



SPARTAN 

 **VALERO** Inc.  
RETURNING LIFE

Restore, save and preserve



# MOVE WITH STRENGTH

Contact us for information on which heavy equipment best fits the needs of your operation. We're here to help. **#mueveteconfuerza**



# **TABLE OF CONTENTS**

Shopping Carts .....	1-4
Amigo Mobility .....	5-6
Baskets .....	7-8
Compact loop .....	9
Commercial Line .....	10-13
Forklift Equipments .....	14-15
Material Handling .....	16-18
Industrial Wheels .....	19-22
Equipment Remanufacturing .....	23
Our Services .....	24-26
Our History .....	27

# ***SHOPPING CARTS***



SPARTAN



### **ANTIMICROBIAL COATING:**



We have adapted healthcare industry technology for shopping carts, now offering antimicrobial powder coating for enhanced customer safety.



### **UNIQUE, MADE IN PUERTO RICO:**

Our models have the Made in Puerto Rico seal, being the only ones manufactured locally in the island.



### **GALVANIZED SHOPPING CARTS:**

Our shopping cart models have the anti-corrosion treatment for longer durability.



**Metal shopping cart**  
(Model 212L)

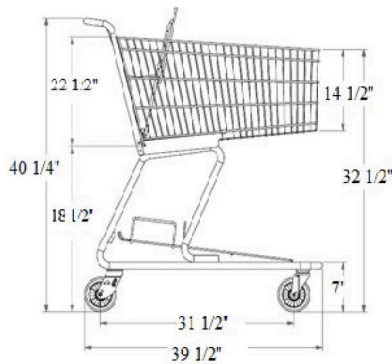
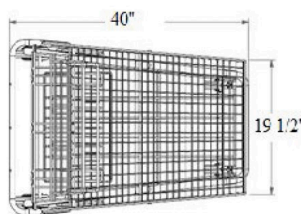


**Exclusive Line of Shopping Carts with the Made in Puerto Rico Seal; with wheels from our Spartan brand.**

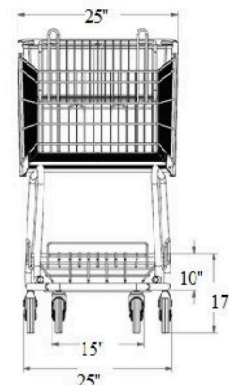
We offer a variety of colors, and can customize the carts to match your brand's color.



**Metal shopping cart**  
(Model V190L)



**Dimensions**  
(Model V190L)







Amigo motorized shopping carts made in the USA and with over 50 years of experience, we offer our customers comfort and safety while making their purchase.

Equipped with a battery that lasts up to 20 hours per charge and a user capacity of up to 500 pounds. The cart is designed with a seat sensor, ensuring it won't operate unless the driver is seated.



Drive off protection that prevents carts from moving while charging

Lighted AC cord helps identify working outlet. One screw replacement

The seat switch prevents carts from moving when customers are not seated

Welded warning signs (Standard and XL baskets only)

0-9 digital diagnosis for quick troubleshooting

Color coded battery level gauge

Enclosed handle protects the throttle from accidental movement

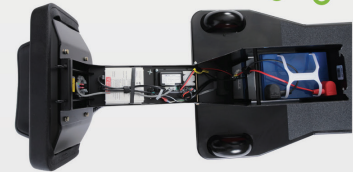
Unlock and lower seat for easy access to service components

Quick battery replacement

All steel frame and seat pedestal

Additional stability wheels

Modular drive components allows you to only replace the parts you need



XL BASKET 250 lbs. capacity



MIDSIZE BASKET 75 lbs. capacity

Shopping carts with a variety of colors and different load capacity in the basket. Ask about the different options to optimize your motorized shopping cart.



Motorized shopping cart with plastic basket



# DISCOVER THE CLEANING REVOLUTION WITH



## Redefine Efficiency in Cleaning Your Spaces

### Unprecedented Power and Capacity

**Long Battery Life:** The Ayis Scrubbot, powered by a 120AH lithium battery, provides up to 4 hours of autonomy, enabling extensive cleaning coverage without frequent recharging.

**Large Capacity Water Tank:** Equipped with a 117L tank, this equipment guarantees continuous and effective cleaning, ideal for large surfaces.

### Extensive and Effective Cleaning

**Exceptional Coverage:** With an operating efficiency of up to 20,000 square feet (1800 m/h) and a cleaning width of 3 feet, the Ayis Scrubbot outperforms traditional manual cleaning methods, improving productivity by 60% to 80%.

### Advanced Technology and Security

**Fingerprint Lock (Optional):** Ensure equipment operation with biometric locking technology, adding an extra level of security and customization.

**Smart Sensors:** Equipped with cutting-edge technology, including LiDAR, deep vision, and ultrasonic sensors, the Ayis Scrubbot precisely detects obstacles, preventing accidents and ensuring meticulous cleaning.

### Versatility on All Types of Floors and Scenarios

**Ideal for:** Supermarkets, megastores, factory buildings, commercial complexes, transportation hubs, logistics warehouses, hotels, office buildings, medical institutions, exhibition centers, schools, sports facilities, underground parking lots, etc.

### Why Choose Ayis Scrubbot?

- **Maximize Productivity:** Less cleaning time, more time for your business.
- **Adaptable and Safe:** Manual or automatic loading and filling technology, with advanced safety configurations.
- **Low Maintenance and High Durability:** Fire-resistant and corrosion-resistant materials.



Especificación	Valor
Dimensiones totales	39,37" × 33,07" × 47,24"
Máxima eficiencia de trabajo	20,000 pies cuadrados sin necesidad de recarga
Ancho de limpieza	3 pies
Máxima resistencia	4 horas
Tiempo de carga	4-5 horas
Batería (batería de litio)	24V/120Ah
Volumen del tanque de agua	Depósito de agua limpia 72 L, depósito de aguas residuales 45 L
Material de proceso del tanque de agua	Proceso de moldeo rotacional, material plástico retardante de llama y a prueba de óxido.
Peso	242.51 libras
Configuración de sensores	Visión profunda, ultrasónico, tira anticollisión electrónica, anti caída
Método de carga y llenado de agua	Llenado/carga de agua manual (estándar) Llenado de agua/carga automática (opcional)
Velocidad máxima	0,6 m/s (aprox. 1,97 ft/s)
Ruido	≤72dB
Degradado	4°





# **BASKETS**



**Hand Basket**

Lightweight hand basket with metal handles, available in red.  
Model No.: TMZ Plastic Basket.



**Basket with Wheels**

Two-wheeled basket with 36" telescopic handle and standard handle use as a hand basket. 55 liters, Red color.  
Model: Roller



**Retractable Wheeled Basket**

4-wheel basket with two folding handles. 45 liters, Red color.  
Model: Shop Roll



Metal display stand that elevates your baskets or products.

Dimension: 14" x 10"  
Capacity: 500 lbs.

**MOVE WITH CLASS**

Retractable Wheeled Basket

Hand Basket

Basket with Wheels



**COMERCIAL**  
**LINE**

[www.yarascorp.com](http://www.yarascorp.com)

We enhance your business with our wide range of equipment for bakeries, butcheries, restaurants, and also offer cleaning equipment.



**Bun Pan  
Aluminium Cart  
18 x 26**



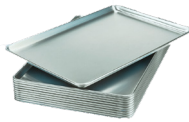
**Aluminum  
Platter Cart  
12" x 30"**



**- 6 canis-  
ter**



**Lugs Canister  
16" x 25" x 8"  
& Lug Lid 16" x  
25" x 8"**



**Aluminum Solid  
Bun Pan  
18" x 26"**



**Plastic Trays for  
Meat Cart  
12" x 30"**



**Aluminum  
Perforated  
Bun Pan  
18" x 26"**



**6 Bushel Bulk Mover & Tub**



**Steel Utility Cart  
20" W X 41" L X 31" H**



**Service Utility Cart  
30" X 16"**



# JANITORIAL EQUIPMENTS



**Janitor Cart with bag**

It is crucial for businesses to keep their facilities clean and in optimal condition. To make it easier, we offer a variety of new cleaning equipment and also provide rental and maintenance programs for your convenience and benefit.



**Mop Bucket**

Available in:  
20 Lts. y 55Lts



**Caution Sign**



**Speed Scrub crubber -32"**

Sale - Repair & Leasing



**Battery Autoscrubber, 20"**

Sale - Repair & Leasing



**Propane Floor Burnisher - 420BU 21"**

Sale - Repair & Leasing

# ***FORKLIFT EQUIPMENTS***



# SALES, SERVICES AND RENTAL



## Electric Pantograph Stacker

Maximum weight 3,300lbs. Maximum height 19 feet.



## Full Electric Straddle Leg Stacker

Max weight. 3,300lbs. Maximum height 18 feet.



## Scissor Lift Electric Drive FS0407E

Maximum weight 500 lbs. Maximum height 25 feet.



## Electric Forklift YSELC45

Maximum weight capacity: 4,400 lbs. Maximum height:



## Scissor Lift 96' x 48"

Maximum weight 500 lbs. Maximum height 25 feet.



## LPG & Gasoline Forklift YSLPG45

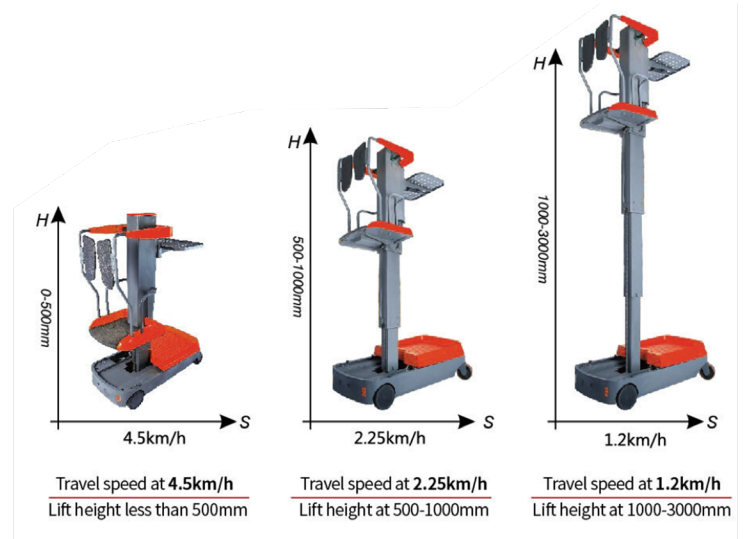
Maximum weight capacity: 4,400 lbs. Maximum height:  
10 feet.





## OPISM Light Type Order - Picking Truck

Loading Tray Load Capacity: 200 lbs  
 Loading Dock Loading Capacity: 380 lbs  
 Cab Loading Capacity: 290 lbs  
 Maximum Platform Lift Height: 9.8' ft



Load Capacity	4,000 pounds
Load Center	24 inch
Max Lifting High	19" feet
Operator type	Standup
Overhead Guard Height	88 inch
Overall Length (without forks)	72,2 inch
Overall Width	42,3 inch

Battery Voltage/Rated capacity	36/1240 V/Ah
Drive Motor - 60 min. rating	4,5 KW
Pump Motor - 15 min. rating	10,1KW
Drive motor Control Method	MOSFET/AC
Controls	ZAPI

Turning Radius (in standard battery compartment)	60,2 inch
Right Stack Aisle Width (Pallet size 40x40in, clearance:7.9in)	68,1 inch
Right Stack Aisle Width (Pallet size 47x47.2in, clearance:7.9in)	113,5 inch
Tire type	Cushion
Max. Travel speed (loaded/unloaded)	11,6 KM/H

## SPARTAN-CPDSR15-20\_LI-ION



# VANGO 500

An innovation that revolutionizes the freight transport industry.

Replace your platform lift, hand pallet truck, stacker, ramp, etc

Easy and fast transport: this solution can load itself onto your truck, van or trailer (with or without fork load), increasing efficiency and making deliveries easier and faster.





**MATERIAL  
HANDLING**



**SALES AND SERVICE FOR: HOTELS, MANUFACTURING,  
HOSPITALS, RETAIL AND WHOLESALE.**



**Pallet Jack Full Electric 27" x 48"**

Weight Capacity 4,400lbs.

Discover the ideal solution for your loading and unloading needs with our range of next-generation **Spartan** pallet jacks.



**Pallet Jack Manual 27" x 48"**

Weight capacity available in: 6,600 LBS,  
and 7,700 LBS



**Full Electric Pallet Truck w/ Load Backrest**

Weight Capacity 4,400lbs

# Feel the power in your hands.



## Electric Lift Table

Weight Capacity 880lbs.



## Scale Pallet Hand Truck

Weight capacity 6,600lbs.

Discover quality and durability in every detail with Yaras Corp's **Spartan** branded products. Designed to meet the toughest challenges, our products give you the confidence and performance you need in your day-to-day life. From shopping carts to lifting equipment, every Spartan product is built to last and exceed your expectations. Experience the power of Spartan and elevate your operation with Yaras Corp.



## Manual Lift Table

Weight Capacity: 2,200lbs.



[www.yarascorp.com](http://www.yarascorp.com)

# PRO MAX Platform

Electric Platform 53" x 47" 1,100 lbs. Capacity.



## U-Boat Platform Truck

Available in the sizes:  
60" x 16" x 52" or 48" x  
16" x 52"

Capacity:  
800 lbs. -1,000 lbs.



## Spartan Hand Truck

Steel Faceplate

Semi-pneumatic wheels  
with precision bearing.

Capacity: 1,600 lbs.



# MAGLINER®

**EXCLUSIVE Distributor**

## Hand Truck Standard

Hand Truck Standard  
Weight capacity 500  
lbs.



## Gemini Sr. Convertible Hand Truck

U-shaped handle, 18' x 7-1/2' faceplate,  
made of die cast aluminum.  
Capacity: 500 lbs to 1,000 lbs  
Dimensions: 61" x 20.5" x 19"

## Gemini Jr. Convertible Hand Truck

Double-grip handle, 18' x  
7-1/2' faceplate, made of die  
cast aluminum  
Capacity: 500 lbs to 1,000 lbs  
Dimensions: 51" x 21" x 19"





# HEAVY DUTY LOOP HANDLE TRUCK



Heavy Steel Nose 14' X 9"  
Semi-pneumatic wheels  
with precision bearing  
Maximum Load Capacity:  
1,600 lbs.

**SCAN HERE TO  
CUSTOMIZE YOUR EQUIPMENT**



## SEMI-PNEUMATIC RUBBER YS-4.10/3.50-4

*Semi-pneumatic wheels equipped  
with precision bearings.*



**¡CONTÁCTANOS HOY!**

WWW.YARASCORP.COM • VENTAS@YARASCORP.COM • 787-288-6633

# ***INDUSTRIAL WHEELS***





# HUGE VARIETY OF WHEELS

All kind of wheels for all types of industry. Specialists in Shopping Carts, Pallet Jack, U-Cart, Hand Truck, Bakery and Butcher Equipment etc.



PHC-W12043NG • RUEDA 4X1.1/2 • HIGH TEMP



### 1. YS-W12043NG

4" x 1-1/2" high temperature wheel rated up to 300 lbs per wheel, is impact resistant and temperature resistant from -50 to +550 degrees Fahrenheit.



### 6. YS-WC2054LD

Polyurethane wheel 5" x 1-1/4" with capacity 250 lbs. per wheel.

Uses: shopping carts, butcher and bakery carts among others. Our brand SPARTAN Wheels. UL Certified.



### 2. WC-W6PCI6600

6" x 2" polyurethane and cast iron wheel, with a capacity of 1,200 lbs. per wheel, resistant to most chemicals, oil, acids, greases and water. It does not mark the floor.

Uses: Can be used in most bearing equipment.



### 7. YS-WC4062LP

Wheel 6" x 2" polyurethane. 1/2" quad bearing with capacity 1,000 lbs. per wheel.

Uses: warehouse equipment such as grocery cart/u-boat, flat bed/pallets, among others. Our brand SPARTAN Wheels



### 3. WC-W6RCI6600C

Wheel 6" x 2" cast Iron on the inside and rubber on the outside. with a capacity of 500 lbs. per wheel.

Uses: warehouse equipment such as grocery cart/u-boat, flat bed/platforms, among others.



### 8. YS-WC4082LP

Wheel 8" x 2" Polyurethane. 1/2" quad bearing with a capacity of 1,100 lbs. per wheel. Anti-marks.

Uses: warehouse equipment such as grocery cart/u-boat, flat bed/platforms, among others. Our brand SPARTAN Wheels



### 4. YS-30802MRR

8" x 2" Cast Iron Inside and Rubber Outside with 600 lbs. capacity per wheel

Uses: Warehouse equipment such as grocery cart/u-boat, flat bed/flatbeds, among others.



### 9. YS-WI3054JFW

5" x 1-1/4" Soft Rubber wheel with 250 lbs. capacity per wheel.

Uses: for shopping carts, butcher and bakery carts among others. Greater resistance capacity in the roll.



### 5. YS-WC2041LK

4" x 1-1/4" Polyurethane wheel with 3/8 axle. Capacity 250 lbs. per wheel.

Uses: warehouse equipment, dolly, carts among others. Our brand SPARTAN Wheels.



### 10. B-ALEV200/20K

8" x 2" Rubber wheel with 1,100 lbs. capacity per wheel.

Uses: electrical equipment such as cart manager, quick cart and warehouse equipment such as grocery cart/u-boat, flat bed/platforms, among others.

# We assemble the wheels you need



## 11. WC-PW100HBPB5/8

10" pneumatic wheel with 350 lbs capacity. per wheel.

Uses: hand truck, pressure washing machine, power plant, among others.



## 12. WC-W3PHN5200C

3" x 1-1/4" phenolic wheel with 400 lbs capacity. per wheel. check wheel capacity

Uses: different equipment used in mechanical workshops or in places where any type of abrasives are used.



## 13. WC-W8PHN6600-C

8" x 2" phenolic wheel with 1,400 lb capacity. per wheel.

Uses: different equipment used in mechanical workshops or in places where any type of abrasives are used.



## 14. WC-W5SR5200

5" x 1-1/4" Soft Rubber wheel with 200 lb capacity. per wheel.

Uses: for warehouse equipment such as grocery cart/u-boat, utility cart/ rubbermaid, among others.



## 15. DU-NY80JE04

8" x 2" nylon wheel with 1,100 lb capacity. per wheel.

Uses: for bearing equipment for pharmaceuticals, hospitals, opticians, among others.



## 16. WC-W5PPSBG5200

5" x 1-1/4" Soft Rubber wheel with 250 lbs capacity. per wheel.

Uses: warehouse equipment, dolly, shopping cart, bakery/butcher carts, utility cart/rubbermaid, among others.



## 17. DU-PC180X50

Wheel 180mm x 50mm (7"x2") in polyurethane and iron core. Capacity of 1,900 per wheel.

Uses: replacement wheel pallets jacks manual; our Spartan brand.



## 18. DU-PS73X95

73mm x 95mm wheel in polyurethane and iron core, 3.70" Hub, 20mm I.D., capacity 1,300 lb. per wheel.

Uses: replacement wheel pallets jacks manual; our Spartan brand.



## 19. WC-W2TRP3000

2" x 7/8" thermoplastic wheel with 100 lbs capacity. per wheel.

Uses: for office chair, for household goods, among others.



## 20. WC-PW100HSPNU5/8

10" x 5/8 semi-pneumatic wheel with 350 lbs capacity. per wheel.

Uses: hand truck, pressure washing machine, power plant, among others.



## 21. DU-BC80JX63

Wheel 8" x 2" Rubber balloon cushion on aluminum wheel, with a capacity of 450 lbs. per wheel.

Uses: warehouse equipment such as grocery cart/u-boat, flat bed/platforms, among others.



## 22. GN-CR044506001

Rueda 3" x 3-3/4" poliuretano con capacidad 1,300 lbs. por rueda.

Usos: Pallet Jack Load Support Wheel.



## 23. WC-W4VG6600C

4" x 2" cast iron wheel with 1,000 lb capacity. per wheel

Uses: electric and/or manual gates, or for road transport cars, among others.



## 24. MAG-10815

8" semi-pneumatic wheel (Mold-On Rubber) with a capacity of 250 lbs per wheel.

Per wheel. Uses: hand truck, pressure washing machines, among others.



## 25. VARIETY OF FIXED, ROTATING AND/OR SPIKE BASES OF DIFFERENT STYLES.

(THREAD 1/4, 5/16, 3/8 or 1/2, EXPANSIVE 7/8, 1, 1-3/8 or 1-1/2, SQUARE 5/8, 7/8, ROUND 7/8, 1, 1-3/8)



## 26. WC-P566001BBB/WC-P566001BBBTLB

6" swivel base with 6" x 2" pneumatic wheel with 275 lb capacity. per wheel. Optional brake.

Uses: different types of Dolly Carts.



**YS-WC6660R01PCI**

Fixed base with cast iron polyurethane wheel (cast iron) 6" x 2" with capacity 900 lbs. per wheel.

Uses: movements of heavy equipment such as platforms, adaptation of machinery among others.



**28. YS-WC666001PCI/ASS**

Swivel base with cast iron polyurethane wheel (cast iron) 6" x 2" with capacity 900 lbs. per wheel.

Uses: movements of heavy equipment such as platforms, adaptation of machinery among others.



**29. B-LPA-VSTH35K/  
B-LPAVSTH-35KRAPWB/freno**

1-3/8" polyurethane wheel, height with base 1-7/8" with capacity 220 lbs. per wheel. High chemical resistance to many aggressive media. Optional brake.

Uses: equipment that cannot alter the original height and needs to support weight.



**30. YS-WC6680R01RCI**

Fixed base with 8" x 2" rubber cast iron wheel with 600 lbs capacity. per wheel.

Uses: warehouse equipment such as flatbed/platforms, grocery cart/u-boat among others.



**31. YS-WC668001RCI**

Swivel base with 8" x 2" rubber cast iron wheel with 600 lbs capacity. per wheel.

Uses: warehouse equipment such as flatbed/platforms, grocery cart/u-boat among others.



**32. YS-WC525025LD/ASS**

Expansive base with 5" x 1-1/4" polyurethane wheel with 300 lbs capacity. per wheel.

Uses: tables, stoves and industrial kitchen racks with tubular supports (legs) among others.



**33. YS-WC6680R01LP/ASS**

Fixed base with 8" x 2" polyurethane wheel with 900 lbs capacity. per wheel.

Uses: movements of warehouse equipment such as flatbed/platforms, grocery cart/u-boat among others.



**34. YS-WC504021PP/ASS**

Threaded spike base with 4" x 1-1/4" polyurethane wheel with a capacity of 275 lbs. per wheel.

Uses: for convertible hand trucks, electricity generators, small racks, dolly among others.



**FIXED OR SWIVEL  
CASTER WHEELS**

**35. YS-Z30C154CLDE**

Threaded spike base with 5" x 1-1/4" poly wheel with 300 lbs capacity. per wheel.

Uses: shopping carts.



**36. YS-WC668001LP/ASS**

Swivel base with 8" x 2" polyurethane wheel with 900 lbs capacity. per wheel.

Uses: movements of warehouse equipment such as flatbed/platforms, grocery cart/u-boat among others.



**37. YS-WC505042LD/PLAS**

Square pin plastic swivel base with 5" x 1-1/4" polyurethane wheel with 250 lbs capacity. per wheel.

Uses: shopping carts, butcher and bakery carts.



**38. YS-WC505042SHOP**

Stainless steel square spike swivel base with 5" x 1-1/4" polyurethane wheel with 250 lbs capacity. per wheel

Uses: shopping carts, butcher and bakery carts.



**39. YS-WC504003pp3/8ass**

Swivel base with 4" x 1-1/4" polyurethane wheel with a capacity of 275 lbs. per wheel.

(front and rear wheel)



**40. YS-30802GSSMRR**

Wheel 8" x 2" Cast Iron on the inside and Rubber on the outside with a capacity of 800 lbs. per wheel.

Uses: warehouse equipment, platforms, scaffolding among others.



**41. GATEK-A500129**

Gatekeeper Systems. Tire, Foam Filled, Standard 3.50 / 3 Bolt Rim, 4.10 / 3.5-6 (12 OD, 2.75 Tread Width) Wheel.



**42. GATEK- A500128-05**

Gatekeeper Systems - Caster Shock 8" x 2" balloon. Swivel caster wheel.



Restore, save, and preserve.

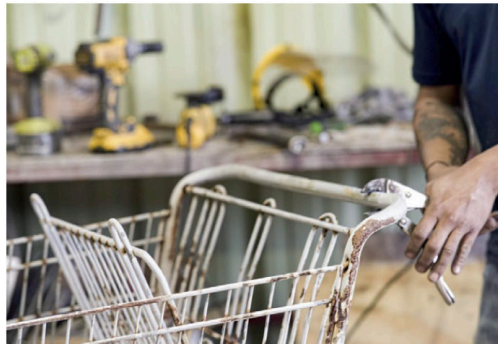


# SHOPPING CART REMANUFACTURING PROCESS:

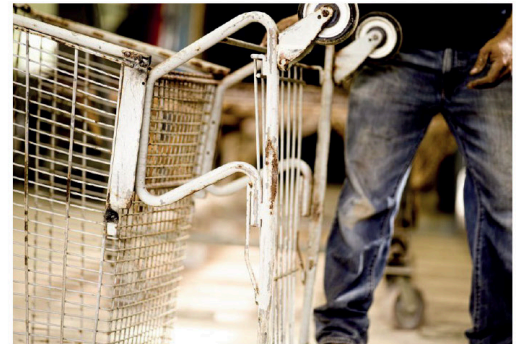
**1. Paint and accessories removal**



**2. Structure repair**



**3. Cleaning the cart**



**4. Application of pre-treatment and powder coating**



**5. Installation of wheels and accessories**

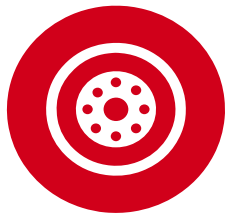


**6. Delivery**



# Learn about our services

We understand the importance of maintaining mobility equipment in optimal condition.



**Mobility equipment  
wheel  
replacements.**



**Forklift and pallet  
stacker repair.**



**Repair and maintenance  
of manual and electric  
pallet jacks.**



## We also have:

- Repair services for cart pushers, and floor washing and polishing machines.
- Shopping cart remanufacturing
- Refrigerator grill repair
- Direct onsite service

# **OUR STORY**

At the end of the 90's in Puerto Rico, there was no company dedicated to the repair of shopping carts. Supermarket owners only had the alternative of buying new ones outside of Puerto Rico.

To solve this situation, Yaras Corp was born in 2000, founded by Roberto Fuenmayor. Providing supermarkets with repair and maintenance services to their shopping carts.

In 2017, we revolutionized the industry by opening the first shopping cart remanufacturing plant in Puerto Rico: Valero Inc.

For over 20 years, Yaras Corp has maintained shopping carts, wheels, and mobility equipment in optimal condition at affordable costs.

## **MISION**

Assisting companies in maintaining their shopping carts and loading equipment in optimal condition.

## **VISION**

To be the leading company in mobility equipment solutions for the food industry in Puerto Rico and the Caribbean.

## **VALUES**

Service • Quality • Respect



# ***THE FUTURE IS NOW***



# ***MOVE TO THE FUTURE***

Y A R A S C O R P . C O M

## ***CONTACT US***



+1 (787) 288-6633



sales@yarascorp.com



Calle #2 Marginal 864 Local 18-19  
Bayamón, Puerto Rico



/yarascorp



@yarascorp

www.yarascorp.com • www.valeroinc.com



DEPARTAMENTO DE  
DESARROLLO ECONÓMICO  
Y COMERCIO

**DDEC**

